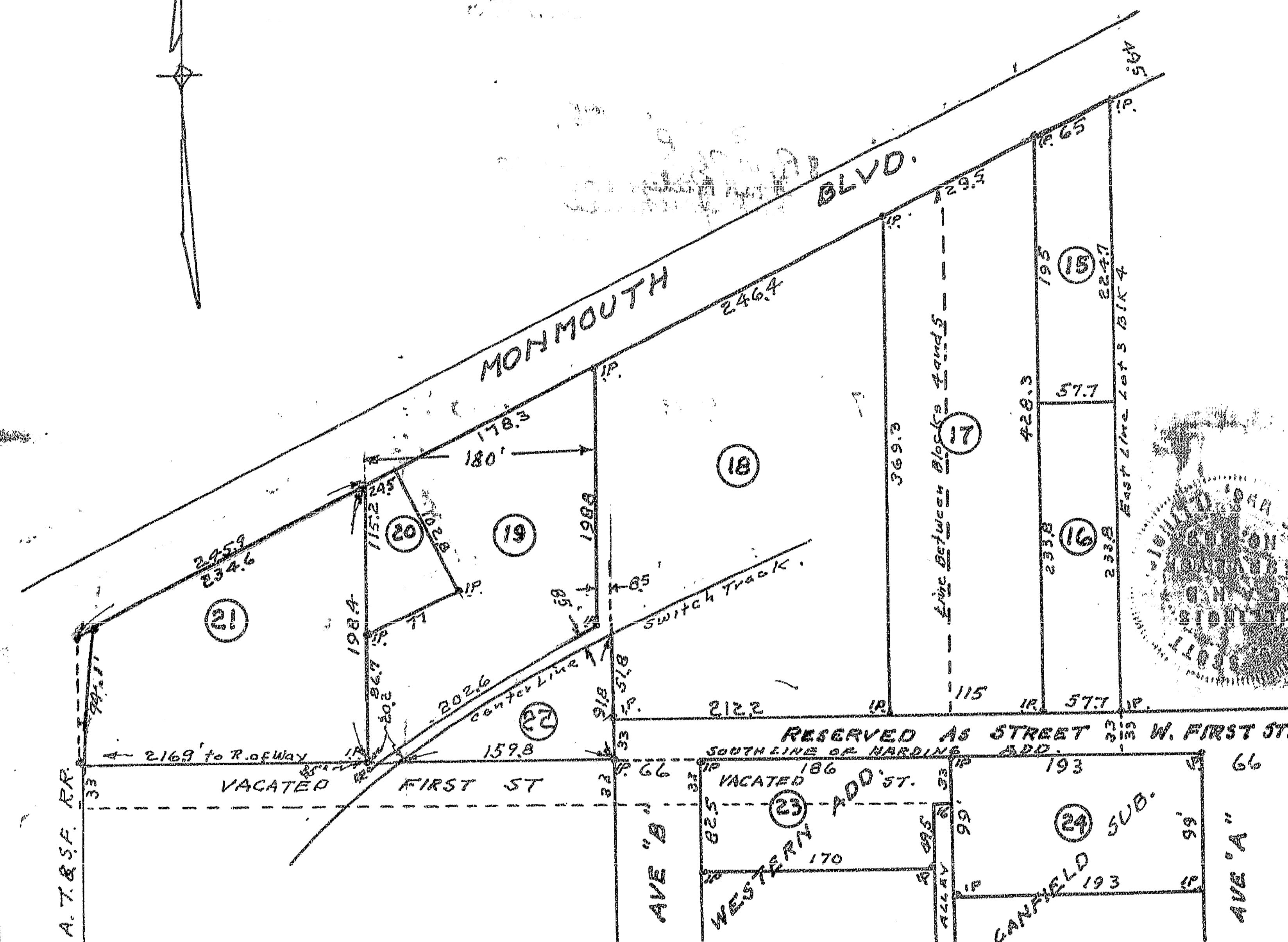


REVENUE PLAT 1957

OF

A RESUBDIVISION OF LOT 3 IN BLOCK 4, LOT 1 AND A PART OF LOT 2, IN BLOCK 5 ALL IN THE HARDING ADDITION; ALSO LOT 1 IN BLOCK 1 OF THE WESTERN ADDITION AND THE ABUTTING WEST FIRST STREET (NOW VACATED); ALSO LOTS 9 AND 10 IN THE CANFIELD SUBDIVISION ALL IN THE CITY OF GALESBURG, KNOX COUNTY ILL.

SCALE 1"=100'



STATE OF ILLINOIS)
 KNOX COUNTY) ss. I, Samuel H. Hinchman, County Clerk, within and for
 said County in the State aforesaid, do hereby certify that I am the Keeper of
 the records, files and official seal of said Knox County; I further certify that
 I find no reasonable tax sales, delinquent general taxes, unpaid current general
 taxes or special assessments against any of the real-estate included in the
 annexed plat.
 Witness my hand and official seal this 10th day of September
 1957 Samuel H. Hinchman County Clerk.

STATE OF ILLINOIS)
 KNOX COUNTY) ss. I, S.S. Scott, County Surveyor of said Knox
 County do hereby certify that the foregoing and annexed is a true plat
 and description of land as taken from the records of said Knox County, and
 by measurement and survey, as provided in Chapter 120 Sec. 517 Revised
 Statutes of Illinois 1955. Dated this 31st day of July 1957.
 S.S. Scott I.L.S. #369
 COUNTY SURVEYOR.

Approved by me this 10th day of September 1957. Samuel H. Hinchman
 COUNTY CLERK.